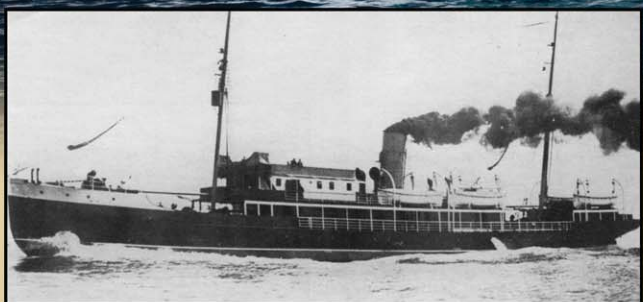


EPA Wood Stove **KYLE 2.0**



SS Kyle

The heroic and majestic SS Kyle was built as an icebreaker, designed to tackle the job of sailing the Labrador run. She was substantial for an Alphabet Fleet boat, weighing 1055 tonnes and is fondly remembered as being a magnificent ship.

Named after this proud Alphabet Fleet ship, Steers presents the Kyle 2.0 EPA-approved wood stove. Using improved air intake, our Legacy Collection of wood stoves allow for more complete combustion, which is better for the environment.

Features of the Kyle 2.0

- ◆ Heats up to 2,000 square feet
- ◆ Average efficiency rating of 70%
- ◆ Easy-to-access ash pan
- ◆ Maximum log length of 18"

LEGACY
woodstove  collection

steers 
SINCE 1870



Technical Data

KYLE 2.0

Combustible type	Wood		
Recommended surface (ft)	1 300 to 2 000 ft		
EPA test fuel	25 300 BTU/h (7.4 kWh)		
Seasoned cord wood	75 000 BTU/h (22 kWh)		
Color	Metallic black		
Exterior appliance dimensions:	Width	27 3/4"	
	Depth	23 1/2"	
	Height	34"	
Flue pipe diameter	6"		
Chimney type	2 100 F/ 650 C		
Minimum chimney height	12'		
Firebox dimensions	Width	19 1/2"	
	Depth	18"	
	Height	11"	
	Volume	2.3 ft	
Maximum log length	18"		
Door opening dimensions	Width	11 3/4"	
	Height	10 3/4"	
Door type	Glass/Cast iron frame		
Pyroceramic glass surface	Width	10 1/4"	
	Height	8 3/4"	
Weight (lbs/kg)	425 lbs (193 kg)		
Limited Warranty	Lifetime		
Clearances to combustible materials	Stove Pipe	Single	Double
	Back	16" (406 mm)	10" (254 mm)
	Sides	15" (381 mm)	15" (381 mm)
	Corners	9" (229 mm)	9" (229 mm)
	Height	7' (2.13 m) from hearth pad to ceiling	
Floor protection	Must exceed by 8" (203 mm) on the sides and at the back. Must exceed by 18" (457 mm) at the front.		

Optional:

- ◆ 130 CFM blower with variable speed

