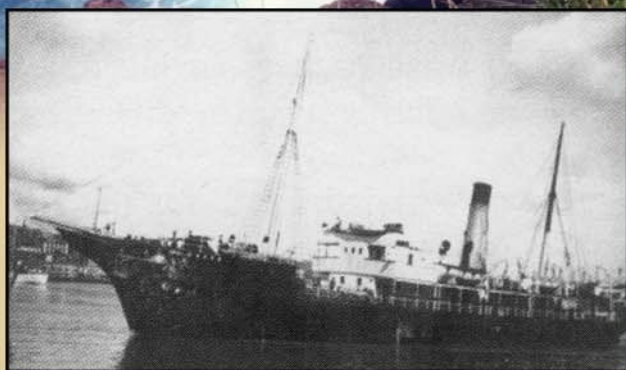


EPA Wood Stove

GLENCOE 2.1



SS Glencoe

Launched in 1900, the SS Glencoe was the longest serving ship in the Alphabet Fleet. During almost six decades of loyal service, she sailed the South Coast and stopped at places such as Marystown, St. Lawrence, Burin, Fortune, Grand Bank, St. Jacques, Dublin Cove, Burgeo, as well as many other locations.

Named after this proud Alphabet Fleet ship, Steers presents the Glencoe 2.1 EPA-approved wood stove. Using improved air intake, our Legacy Collection of wood stoves allow for more complete combustion, which is better for the environment.

Features of the Glencoe 2.1

- ◆ Heats up to 2,050 square feet
- ◆ Average efficiency rating of 70%
- ◆ Average emissions of 3.4g/h
- ◆ Easy-to-access ash pan
- ◆ Maximum log length of 18"

LEGACY
woodstove  collection

steers 
SINCE 1870



Technical Data

GLENCOE 2.1

Combustible type	Wood		
Recommended surface (ft)	1 050 to 2 050 ft		
EPA test fuel	52 000 BTU/h (15.2 kWh)		
Seasoned cord wood	85 000 BTU/h (24.9 kWh)		
Color	Metallic black		
Exterior appliance dimensions:	Width	25"	
	Depth	29"	
	Height	33 1/2"	
Flue pipe diameter	6"		
Chimney type	2 100 F/ 650 C		
Minimum chimney height	12'		
Firebox dimensions	Width	17"	
	Depth	19 1/4"	
	Volume	2.9 ft	
Maximum log length	Width	18"	
	Height	15 1/2"	
Door opening dimensions			9 3/4"
	Door type		
Pyroceramic glass surface	Width	14 1/2"	
	Height	10 1/4"	
Weight (lbs/kg)	420 lbs (191 kg)		
Limited Warranty	Lifetime		
Clearances to combustible materials	Stove Pipe	Single	Double
	Back	14"	6"
	Sides	14"	12"
	Corners	7"	6"

Included:

- ◆ 130 CFM blower with variable speed

